

Monthly e-newsletter from **The South African Institute of the Interior Design Professions (IID)** designed to give Members insight as to the developments taking place within the Institute, our Members and the Industry.



Above: Introducing one of the **Rina** lamps from the “Design Barbara Maggiolo 2009 Collection”. Pendant, ceiling and floor lamps available from Pure Light SA (IID Corporate Member)

Message from the MD

Dear Members

Welcome to the Spring 2009 newsletter! Along with the sunshine of summer comes a new energy and it's always a revitalizing time for me – as I'm sure it is for others.

As designers and decorators it's in your nature to solve problems. You listen, understand and create design solutions that improve your client's surroundings and create a better tomorrow. As we find ourselves in the midst of an economic downturn I encourage you to hold true to your nature. Your clients need your talent and capabilities now more than ever. As designers you have the ability to have a direct impact on your clients, the economy and the quality of their lives.

Continued on page 2

IID FOUNDING MEMBERS

decorex
durban • cape town • joburg

the design **Partnership** • (Phys) Ltd

**builders
warehouse**
HOME IMPROVEMENT A TO Z

**Dulux
TRADE**

PG BISON

PLASCON
Paint with imagination

CF
BUSINESS FURNITURE

**design
centre**
college of
design

INSIDE THIS ISSUE

- 1 Unique Marketing Opportunity for IID Members
- 2 World Famous Designer Kenneth Cobonpue Visits SA

Message from the MD

We can't print money but you can ensure that everything you create is designed to improve performance, function and quality of life across all our working and living environments.

So what can the IID do to assist our Members to increase revenue? Simply we are striving to create greater exposure for Members to residential and commercial clients. We are therefore delighted to announce an exciting new marketing opportunity in this newsletter for both the Institute and our Members that will increase awareness of the IID brand and associate and showcase the exceptional talent of our Members.

Please take a few minutes to peruse this issue of the **iid insight** to find out more.

As always if there is anything I can do better to serve our membership, partners and industry please let me know.

Regards

Laura Hayward

SEND US YOUR FEEDBACK / IDEAS!

WANT TO GIVE FEEDBACK / SUGGESTIONS ON HOW THE IID CAN IMPROVE OUR SERVICE TO MEMBERS? OR WANT TO SEND US SOME INTERESTING TIPS / NEW INFORMATION? WE'RE INTERESTED IN YOUR VIEWS, SO PLEASE SEND AN EMAIL TO MD@IIDPROFESSIONS.COM □

WELCOME NEW MEMBERS

If anyone has objections to any of the following new Members being appointed, please let us know before 16 October 2009. All objections must be lodged in writing.

PROFESSIONAL – GAUTENG

LISA WILSENACH

PROFESSIONAL CORPORATES – GAUTENG

LIFE

MAIRA KOUTSOUDAKIS

JOHN KOUTSOUDAKIS

TONY PEREIRA

NORA HEREDIA

VANESSA MACEDO

MOTSE INTERIORS

MIGUEL OLIVEIRA

SIMON MATIKO

CARLOS FRANCO

NICOLE BURT

TINUS VAN NIEKERK

PREMIERE DESIGN STUDIO

BRAD NAPIER

DIKLA BENLOULOU

RONEL DU TOIT

WAYNE COLLETT

PROFESSIONAL CORPORATE – W/CAPE

COLLABORATION

GEOFFREY BENNETT

JACQUI WESSEL

RUSSELL GILDENHUIS

GRANT JOHNSON

NADINE DU TOIT

STACEY ISHAM

DIETER RAUCH

CHRISTINE SHAW

AFFILIATE – GAUTENG

KINGS PAINT & HARDWARE – GARY HINDE

RETAILER OF PAINT AND DIY ACCESSORIES TO SMALL CONTRACTORS (AT WHOLESALE PRICING) AND TO THE PUBLIC

TEL: 011 802 3485

WWW.KINGSPAINT.CO.ZA

CANDIDATE – E/CAPE

DANIQUE KIRTON – STAUCH VORSTER ARCHITECTS

APOLOGIES – DANIQUE WAS INCORRECTLY LISTED UNDER THE GAUTENG REGION IN OUR AUGUST NEWSLETTER □



SERVICE EXCELLENCE FROM CROSSLEY OF SOUTH AFRICA

A special accolade goes to one of the IID's Corporate Members, Crossley of South Africa for their unbelievable service and care in solving a problem at one of our Professional Member's installations. A problem was encountered at an installation of one of Crossley's top pure wool carpets in an up market home designed by Deborah Witkin Interior Designs. Deborah advised that "On contacting Crossley and explaining my position, Natasha Esteban immediately got hold of me, arranged a meeting at my client's home, examined the carpets, took photographs, liaised with the experts on her side, and without any fuss or argument, handled the whole situation to the satisfaction of the client and myself. This is true professionalism and integrity and the backbone of what Crossley denotes. I'd like to thank Natasha and all concerned and look forward to a long association with Crossley of South Africa. IID has in their membership, a huge asset".

Sincerely,

Deborah Witkin

For and on behalf of Deborah Witkin Interior Designs □

www.crossleysa.com

IID Website Statistics for September

IID had a total of 1795 unique visitors (highest number to date!) to the website and a total of 46701 hits (total number of pages and images viewed) during the month of September 2009.

The Top Twenty most viewed web pages for September were:

Builders Warehouse (101), Driekie Thomas (62), Stephen Falcke (57), Gi Alston (56), Deborah Garth (55), Temi Stallings (53), Design School Southern Africa (52), Callie van der Merwe (52), Krysia Back (50), Jurgen Schirmacher (48), Amanda Landers (48), Virginie Koenig (48), Sharon Nicolaci (45), Ame Gehle (42), Lynne Blumberg (41), Michele Basson (41), Karin Laing (41), Laura Dolgner (38), Tanja Tomaz (38) and Leigh Anne Shillaw 37.

100 Professional and 41 Corporate (Supplier) Membership Applications were downloaded □

IID'S MISSION STATEMENT

"TO PROMOTE EXCELLENCE IN THE PRACTICE OF INTERIOR DESIGN; TO IMPROVE THE PROFESSION; TO PROTECT THE RIGHTS OF ITS MEMBERS, TO GROW THE ORGANISATION AND TO EXPAND THE CONTRIBUTION OF THE PROFESSION TO SOCIETY"

Take advantage of a unique opportunity for IID Members

Grand Designs Live is a home renovation exhibition that claims to cover it all. Built on the success of the award-winning UK consumer event, it will take place at the Coca-Cola Dome, Johannesburg from 21 - 23 May 2010. As a TV show, it has brought stylish yet accessible home renovation and design solutions to viewers around the world. Now the magic of this series is coming to Johannesburg and promises to give South Africans the opportunity to be inspired by the vast number of ways to turn a house into a home.

"It is not only a long-running TV programme, it's become a formidable international brand recognised by people all over the globe," explains Ben Gannon, exhibition director for Grand Designs Live.

Featuring hundreds of South Africa's leading companies, a comprehensive seminar programme, advice clinics hosted by leading industry organisations and fantastic features, Grand Designs Live will be so much more than a décor and design exhibition; it will set a new standard for innovation and inspiration. A comprehensive guide through the ins-and-outs of household improvement, Grand Designs Live will have a host of different shows under one roof, with six dedicated areas showcasing the best in Interiors, Technology, Build/DIY, Kitchens, Bathrooms and Gardens.

The IID are thrilled to be supporting Grand Designs Live as part of our strategy to educate the public regarding the Interior Design profession, the role of the IID and the benefits of hiring registered members of the Institute. The "IID House" will play a prominent role in the Interiors Hall which aims to strengthen the IID brand, both within the industry and amongst the general public, and offer our Members increased exposure and publicity.

We are hereby inviting Interior Decorator and Designer Members to decorate one of the eight rooms in the house. There will be no cost for exhibition space as the IID House is being sponsored. Grand Designs is a wonderful way to showcase the work done by our Members and to reach potential new clients. Working under the umbrella of the IID team, who will co-ordinate the build up and running of the show house, will also make it easier for Members to participate at this Expo.

We also want to reach out to our Industry Partners and Suppliers to participate as it's a great opportunity to showcase your products. Furthermore all the Members that contribute to the IID House will be given additional exposure by being included in the IID marketing material handed out at the Expo.

The IID encourages Members to get involved in Grand Designs Live 2010. If you are interested please contact Laura Hayward at md@iidprofessions.com or 011 465 9732 (Kindly note Member's participation will be allocated on a first

GRANDINTERIORS
GRANDGARDENS
GRANDKITCHENS
GRANDBATHROOMS
GRANDTECHNOLOGY
GRANDBUILD



Professional Member Profile

MARIAN DORRINGTON – W/CAPE

Home town - born and raised in? Although born in Glasgow, Scotland, my father always wanted to live in the sunshine so at the age of 12, my family moved to the Bahamas. A few years later my parents returned to Scotland but I went to live with the family of a school friend in Florida, USA. After finishing high school, I returned to my family in Scotland. However, my father decided to move again, this time to Rhodesia so, since the age of 19, I've lived in Africa.



Design specialty? Designing furniture, fitted and freestanding, and believe having something made to specification is always better than settling for something ill fitting.

Family, partner or pets? Married to Chris for nearly 31 years and have two daughters, Leanne 28 and Kelly 25 - neither of whom are remotely interested in the field of design or decor!

What is the biggest challenge for you as a designer today? Overcoming people's perceptions that they "can't afford" you! It's always a challenge when you are only called in once a project is underway and you're expected to fix what went wrong. I also find it challenging to work with some developers as, unfortunately, it has been my experience that they simply want to build as quickly as possible and get paid - no real thought goes into kitchen / bedroom design. I recently completed a project for a young couple who have had nothing but problems with their very expensive townhouse, simply because it wasn't built properly.

Why and when did you join SAGID / IID? Think I joined SAGID around 1997. I was approached by one of the guests at a social function who asked me what they should do about problems they were having with the decorator they were using. I knew about SAGID and suggested that this person contact the organisation. A few months later we met again and he couldn't thank me enough as SAGID had intervened and solved the problem. I decided then that this was an organisation I should join.

Favourite thing to do in your spare time? Play golf.

Who or what has been the biggest motivator in your life or career? My husband who has always supported me and given me the courage to embark on new ideas

Anything else you would like to add? I am very involved in local community affairs and was President of the Helderberg Chamber of Commerce from 1999 - 2001 □

**CONGRATULATIONS TO
MARIAN DORRINGTON ON
HER 20TH BUSINESS
ANNIVERSARY FROM THE
IID COUNCIL AND ALL
MEMBERS!**

What's happening in the Regions?

MEMBER NEWS - KZN



SHAE MAC DONALD FEATURED AT GARLINGTON GRACIOUS LIVING EXPO KWAZULU-NATAL.....

KZN based professional member, Shae Mac Donald's, recent exhibit at the Garlington Gracious Living Expo, which ran from 23 - 27 September 2009 in Hilton just outside Pietermaritzburg, was a huge success.

Pictured above is the living area - just one of the rooms from the apartment that Shae Mac Donald Interiors showcased at the expo. The IID would like to congratulate Shae on the overwhelming response she received from attendees at this show ☐

IID EASTERN CAPE GENERAL MEETING

DATE: **21 OCTOBER 2009**
TIME: 12:30 – 14:00
VENUE: R&R AESTHETICS
3 ROBERTSON RD, NORTH END,
PORT ELIZABETH

MEETING WILL INCLUDE AN INTERESTING PRESENTATION BY NDE AND R&R AESTHETICS ON WORKING WITH STAINLESS STEEL. A LIGHT FINGER LUNCH WILL BE SERVED

RSVP: DEBBIE BY 14 OCTOBER 2009
ADMIN@AMARCHITECTS.CO.ZA OR
041 581 4765 ☐

SAVE THE DATE

IID EASTERN CAPE YEAR END LUNCH

WILL BE HELD ON:

DATE: **9 DECEMBER 2009**
TIME: 11:30 – 14:00

LUNCH WILL INCLUDE A TALK BY **DAVID MUIRHEAD**, ONE OF SA'S MOST PROMINENT INTERIOR DESIGNERS. PLEASE SAVE THE DATE AND LOOK OUT FOR DETAILS ON THIS EVENT COMING SOON.

WE LOOK FORWARD TO SEEING YOU THERE ☐

What's happening in the Regions?

IID MOFFETT ON MAIN DEXPO EASTERN CAPE

**BY TRISH STRYDOM – 2ND E/CAPE
REGIONAL HEAD**

Recently, the IID Eastern Cape Members were invited by the Moffett on Main Lifestyle Centre to decorate “rooms” at a ‘Dexpo’ held at the centre in September.



Gillian Adendorff Bar

Participants included newly appointed Members, Brigitte Hills, Leigh-Anne Rose, Kirsty Crowe (interior designers) and Danique Kirton (candidate interior designer) together with Gillian Adendorff and her design team (Karin, Chrisma, David, Neil, Beven, Mauritz, Luke and Marc) and Trish Strydom who designed 8 “rooms” which were very well received by all.

Continued on page 8



Brigitte Hills Bedroom

The aim was to only use items that are available from the stores at Moffett on Main in order to promote the centre.

Six designers and decorators from Port Elizabeth participated in the Dexpo which turned out to be an ideal opportunity to expose and showcase IID Members to the public.



Trish Strydom Bedroom



Danique Kirton & Leigh-Anne Rose Dining Room

THANK YOU

TO ALL THE PARTICIPANTS AND TO PLASCON AND DÉCOR WALLPAPER FOR SPONSORING THE WALL COVERINGS.

A SPECIAL THANKS GOES TO TRISH STRYDOM AND GILLIAN ADENDORFF FOR PLANNING AND CO-ORDINATING THIS DEXPO ON BEHALF OF THE IID AND OUR MEMBERS □

The Dexpo was so successful that Moffett on Main decided to keep it open for an extra week. We will be doing another Expo at the centre early next year, but with a different challenge for the Members of the IID.

In her speech at the opening of the Dexpo, Gillian Adendorff (IID E/C Regional Head), said that the designers and decorators had discovered many treasures in the centre and that she is sure we will be using the Moffett on Main Lifestyle Centre more in the future □



Kirsty Crowe Playroom



Gillian Adendorff Study



Danique Kirton & Leigh-Anne Rose Lounge

World Famous Designer Kenneth Cobonpue Visits South Africa

World-renowned designer Kenneth Cobonpue was in South Africa in September to immerse in the outdoor lifestyle which is perfectly suited to his new furniture collection, available from Weylandts in October. Named an icon of contemporary design by Wallpaper magazine along with world luminaries such as Philippe Starck and Antonio Citterio, Cobonpue's creations make up some of Weylandts' signature ranges.



Noodle Coffee Table

“Kenneth’s use of natural sustainable materials including bamboo, wood, abaca and rattan, and his responsible production methods perfectly encapsulate the Weylandts design philosophy,” says Weylandt.

“It’s great to have this design synergy with Chris, and it’s very exciting to see a successful retailer like Weylandts showcasing our products in South Africa,” says Cobonpue, who is visiting South Africa for the first time. “Our designs are so well suited to the beautiful climate and outdoor lifestyle that South Africans enjoy”

Cobonpue’s sensual curvaceous designs, inspired by the natural materials of his native Philippine islands, have been used on Hollywood film sets and in the world’s most exclusive hotels. His evolutionary rattan and abaca furniture caught Chris Weylandt’s eye on a trip to Cebu six years ago, and has been sold in South Africa exclusively at Weylandts since then. Weylandt is the CEO and founder of Weylandts Homestores.



Noodle End Table

Continued on page 10

This 40 year old multi award-winning designer began his passage to design in 1987 at the New York City Pratt Institute. After graduating, Kenneth worked in a leather and wood factory in Italy before undertaking a scholarship in Munich.

He later returned to the city of Cebu where he added a new face to the Interior Crafts of the Islands business founded by his mother. His work now integrates locally sourced organic materials with innovative hand-made production techniques, offering an alternative to Western furniture production.

"Cebu and the surrounding islands inspire many of the range's designs" adds Weylandt. "As a boy, Kenneth was always taken by the exuberant richness of the nature around him. He has accessed those memories to move design forward".

Look out for the new Kenneth Cobonpue outdoor range which will be available at Weylandts from October. The range includes:

- **Balou natural armchair** - This sensuous outdoor armchair incorporates the delicately woven design technique for which Kenneth Cobonpue is renowned. Price on request.
- **Croissant brown outdoor sofa** - An extension of the Croissant range, this chocolate brown sofa also features precisely hand woven material secured to a gently hemispherical frame. Price on request.
- **Lolah capsule** - The innovative slatted design of this whitewashed tubular seating unit is perfect for keeping cool in the sun. Price on request.

Other new products designed by Kenneth Cobonpue that are currently available at Weylandts include:

- **Black Yoda easy chair** - A new addition to the Yoda easy chair range, this is one of the most distinctive chairs sold by Weylandts. Made from stained rattan vines that are woven onto a mild steel frame, the Yoda chair is now available in black as well as bright red and green. Retail at R6 995.
- **Noodle tables** - A twisted structure made from dark stained rattan vines provides a tree-root inspired base for this new collection of glass-topped tables. The Noodle table range includes a rectangular coffee table and a round end table. Noodle coffee table retails at R7 995. Noodle end table retails at R4 995.

For more information and store details, visit www.veylandts.co.za □



Yoda Chair Black

Red Rose Fine Furniture Imports



Red Rose Fine Furniture Imports welcomes all Decorators and Designers to their showroom at 900 Umgeni Road, Durban.

They have bookcases in antique white and matt, black leather deep buttoned chairs and couches, Louis chairs in white and black suede fabrics, servers in black and white, re-cycled teak tops, Giovanni velvet silver and black contemporary chairs, carvers and occasional chairs in white, mahogany and a Florentine silver finish. Ranges also include a selection of computer Armoires, glass Armoires, solid teak TV cabinets, headboards, beds, dressing tables and side tables.

Go and have fun feasting on the beautiful selection of fine furniture imported for you to give your clients the "wow" factor. The styles available are classical, contemporary and antique furniture pieces. All are unique and different and offer the latest trend styles and colour finishes as well as solid wood pieces □

T: 031 312 7252 / 7250

E: celeste@redrosedesign.co.za



www.redrosedesign.co.za

KÄHRS Wooden Flooring is Timeless and Versatile

Kährs wooden flooring from Top Carpets & Floors offers a timeless flooring solution for a wide variety of environments, that is up market and elegant, yet immensely practical.

Used in the home it creates a beautiful space that can withstand even the most hectic family life - a space that will take children from the nursery through to young adulthood.

It is also ideal for sports, retail and hospitality environments where it provides a sense of luxury and reflects a quality image, whilst meeting the performance demands of these busy installations.



An investment in a Kährs wooden floor from Top Carpets & Floors is an investment in a genuine wooden floor, manufactured in Sweden from planks of selected wood, which have been dried and treated to perfection before being coated with a wear resistant lacquer. The result is flooring that is surprisingly low maintenance.

In most cases, cleaning consists of no more than wiping the floor with a damp cloth. What's more wood is a healthy flooring option that does not harbour dust mites and other allergens.

In the event of a panel being damaged, the unique Kährs wood lock system, enables the panel to be replaced. You can even uplift your floor and relay it elsewhere!

Kährs genuine wooden floors have natural warmth. They also absorb more sound than most other hard flooring alternatives.



Continued on page 13

A wide variety of grains and colours are available, with the most popular choices for hotels, lodges and resorts being Jatoba, Merbau and Cherry, which work well in our African surroundings. Lighter colours such as maple or even white-washed finishes are popular among home owners.

Appointed Kährs agents are as follows:

<u>Gauteng</u>	<u>Cape Town</u>	<u>Northern Cape</u>
TC Craighall Park	TC Constantiaberg	TC Kimberley
TC Midrand		
TC Sandton	<u>Western Cape</u>	<u>Southern Cape</u>
TFI Vereeniging	TC Hermanus	TC Knysna
		TC Mossel Bay
<u>Pretoria</u>	<u>KwaZulu-Natal</u>	
TC Centurion	TFI Amanzimtoti	
TFI Silver Lakes		



For more info and store details visit www.topcarpets.co.za □

PG Bison Student of the Year Awards – Showcasing Young Designers for over 15 years

PG Bison Student of the Year Awards celebrates its 15th anniversary, showcasing up and coming designers. The awards once again acknowledged talented young designers for their contributions to this established competition. The awards ceremony took place in a prestigious gala evening held at Steinhoff’s recently upgraded auditorium at their head office in Wynberg.

It is the first year that a commercially orientated brief was introduced to the competition. Michael Hinze, of HKLM, helped conceptualise the brief. Pleased at the outcome of the entries, Michael commented that, “Overall, the students and lecturers did a great job in creating a balance between practicality and creativity”.

PG Bison approached Hertz Rent-a-Car in 2008 with the concept and Hertz kindly agreed to loan their brand to the competition. The brief was to create an airport and downtown rental location that would ensure maximum Brand Recognition as well as setting the Hertz brand apart from its competitors.

Continued on page 14

The students were required to create an ingenious rental environment, consistent in form and harmonious in image – a space with which customers can easily identify and communicate. The Hertz team were impressed by the entries and caliber of design work produced.

This year's esteemed panel of judges included: Michael Hinze of HKLM, Darren Bester of It Is Design, Taryn Constable of Design Vision, Daniel Steyn of Stefan Antoni Olmesdahl Truen Architects, Des Laubscher of Greenside Design Center, Callie van der Merwe of The Design Partnership, Chris Wilkinson of Comrie & Wilkinson Architects and Karlien Thomashoff of Thomashoff & Partner Architects.



After much debate the 5 finalists were (pictured above from the left):

Marco du Plessis of Tshwane University of Technology, Danie Steenkamp of Tshwane University of Technology, Kylie McFadyen of Durban University of Technology, Christopher Clarke of Nelson Mandela Metropolitan University and Gerdus Kriek of Tshwane University of Technology.



Above from the left: Michelle Hankinson (Winning Lecturer) and Kylie McFadyen (Winner)

The winners of the 15th PG Bison Student of the Year Awards were:

In third place, winning a cash prize of R7000.00 was Christopher Clarke of NMMU, under the tutelage of Andrew Palframan. The merit award went to Danie Steenkamp of Tshwane University of Technology. Danie's lecturer is Pieter Greyvenstein. Danie won a fully inclusive trip to the Design Indaba in Cape Town.

The award for first place went to Kylie McFadyen of Durban University of Technology. Kylie's lecturer is Michelle Hankinson. Together they have won a fully inclusive trip to the 2010 Milan Furniture Fair.

Michael Hinze commented on Kylie's entry, "Good overall rounded, holistic design scheme. It works well both as a transient environment of the travel process and as a bold statement in branding. Practicality balances well with the whimsical".

PG Bison would like to congratulate the finalists, their respective institutions and lecturers for their time and effort in this competition □

10% Design Silos Introduction

“For most of us, design is invisible until it fails.” (Bruce Mau)

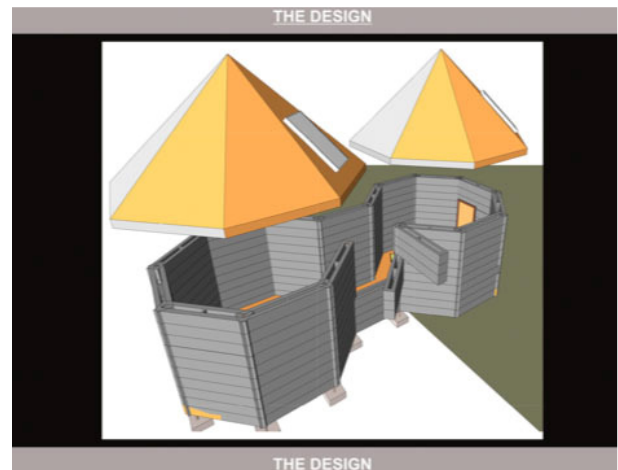
The richest fifth of the world receive 83% of the world income, the poorest fifth 1.4%. (United Nations Development Programme). There are many problems in the world today: consumerism, corporate giants, geopolitical instability, imbalance in wealth, pollution, disease, natural disasters, violence, insufficient food and clean water, etc.,

It is estimated that up to 90% of the world population cannot and do not see the relevance of design, although good design answers a need and solves a problem. **Design should enhance and improve the quality of life for all.**



The concept behind the design silos is in keeping with the mission of Design for the World. Design must play the role of being proactive rather than reactive. There have been many good ideas produced around the world focusing on design for humanity, but unfortunately we have lacked the funding and other necessary abilities to put plans in action when they have been needed, resulting in us acting too slowly and too late to make an impact through design in disaster areas.

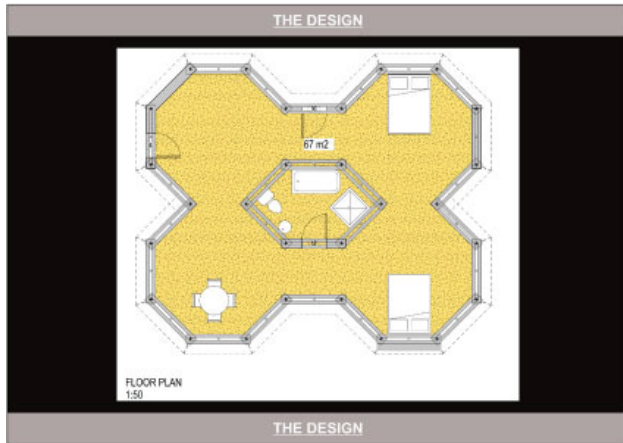
The idea of this project was to build regional capacity though involving designers and design schools in particular (this is a first and Greenside Design Center is piloting this programme) to participate in pooling ideas and intellectual resources to ensure design can make an impact when needed. Good examples where design can impact for instance are in cases like flooding, earthquakes, fires, mass diseases like cholera and HIV/AIDS, air pollution (mostly from deforestation fires), water pollution and the lack of water and displacement of people through conflict.



Different regions obviously have different needs and these should to be identified through research, analyzing problems, coming up with solutions and working within communities to ensure information and results are clearly understood.

Continued on page 16

It is then possible to have distribution points within a community that act as storage facilities and when disaster strikes communities have immediate access to these depots and can react within minutes. Ideally, these designs are targeted at two specific hazards that informal settlements face:



1. Fires within informal settlements and other community based areas such as schools and markets.
2. Flooding and water pollution, specifically looking at prevention of water borne diseases like cholera in polluted water.

Giving the informal settlement's community peace of mind and a better standard of living. Article courtesy of Greenside Design Center □

www.designcenter.co.za

CALENDAR OF EVENTS

Please send your event details to md@iidprofessions.com

IID EASTERN CAPE GENERAL MEETING

DATE: 21 OCTOBER 2009
TIME: 12:30 – 14:00
VENUE: R&R AESTHETICS
3 ROBERTSON RD, NORTH END, PORT ELIZABETH
RSVP: DEBBIE BY 14 OCTOBER 2009
ADMIN@AMARCHITECTS.CO.ZA OR 041 581 4765

IID EASTERN CAPE YEAR END LUNCH

DATE: 9 DECEMBER 2009
TIME: 11:30 – 14:00
VENUE: INVITE & DETAILS TO FOLLOW SHORTLY

HERTEX FABRICS - LAUNCHES OF NEW PRODUCTS

DURBAN SHOWROOM: 1 OCTOBER 2009
BLOEM SHOWROOM: 6 OCTOBER 2009
PE SHOWROOM: 8 OCTOBER 2009
PLEASE CONTACT YOUR HERTEX REPRESENTATIVE FOR MORE DETAILS □

IID CONTACT DETAILS

PHYSICAL ADDRESS

SUITE 124, FIRST FLOOR, DESIGN QUARTER,
LESLIE AVENUE, FOURWAYS

POSTAL ADDRESS

P.O. Box 10642, FOURWAYS CROSSING
CENTRE, 2055

TEL: +27 11 465 9732

FAX: +27 11 465 9802

GENERAL ENQUIRIES:

national@iidprofessions.com

MARKETING ENQUIRIES:

md@iidprofessions.com